

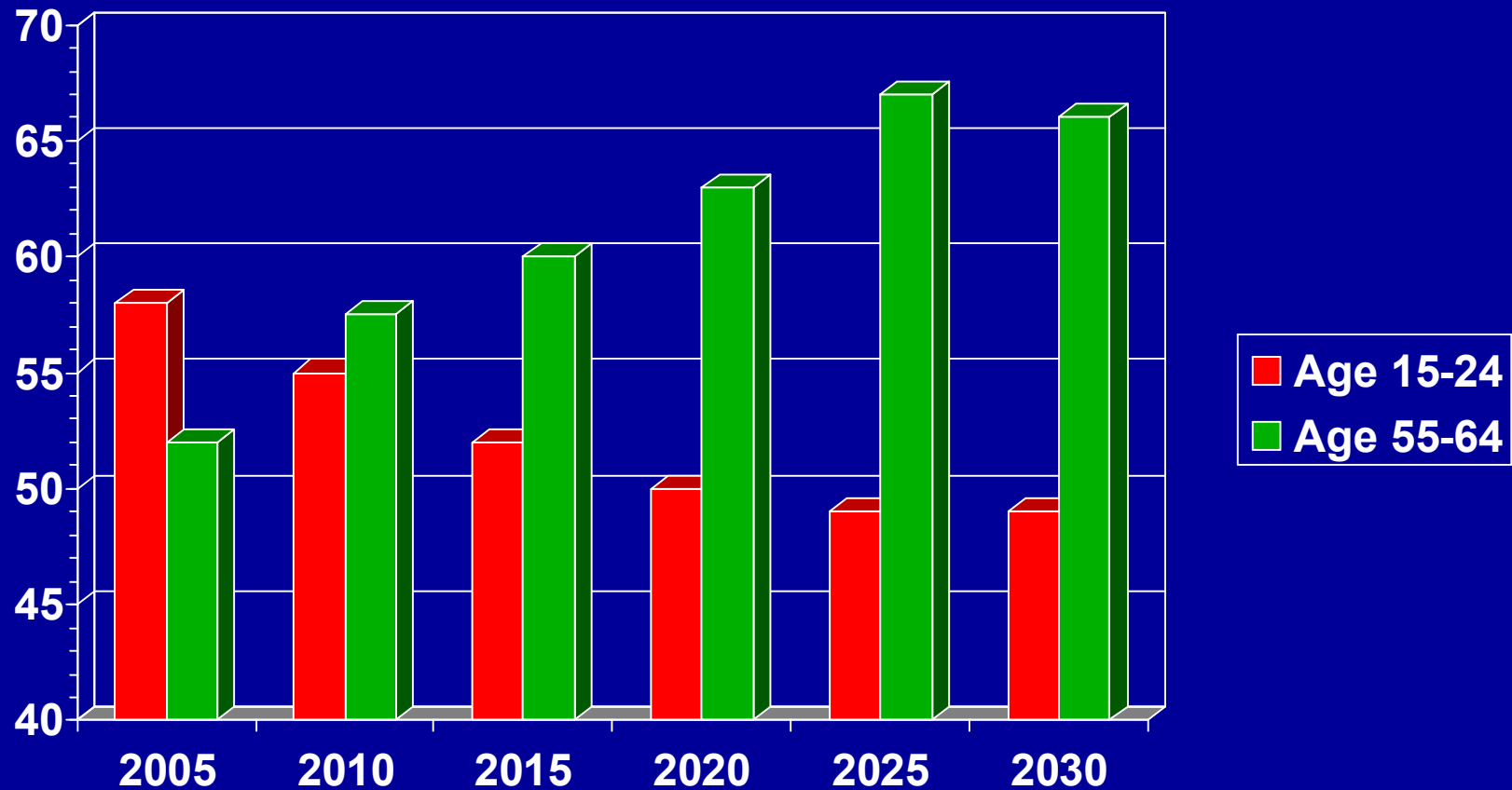
# **BEPA SEMINAR ON FLEXICURITY**

**Commissioner Ján FIGEL'**  
**Brussels 28. 2. 2008**

# **MAIN CHALLENGES AND PROBLEMS**

- **Globalization**
- **Demography**
- **Dynamic changes of the labour market and technologies**

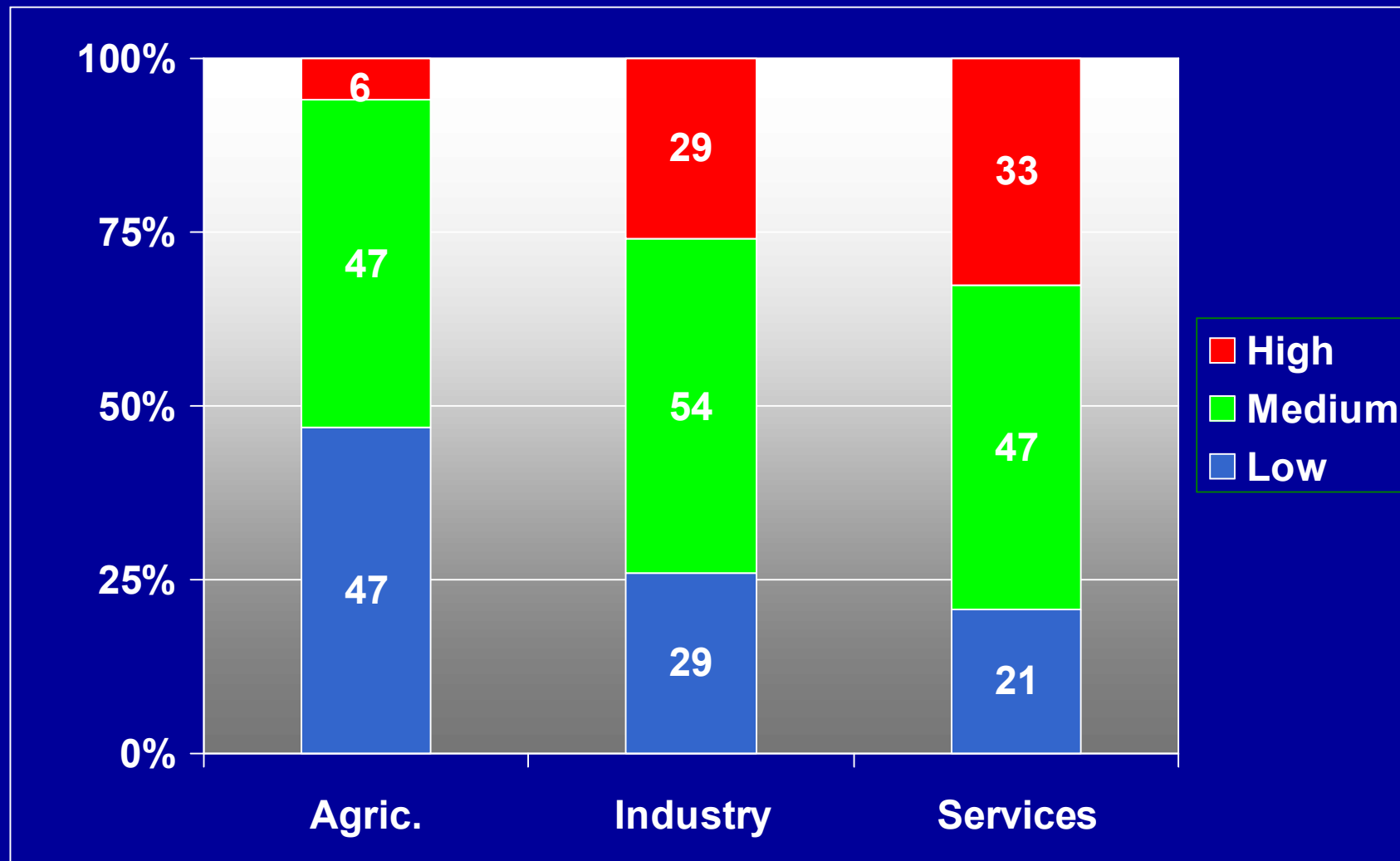
# EVOLUTION OF POPULATION - EU25 (mil.)



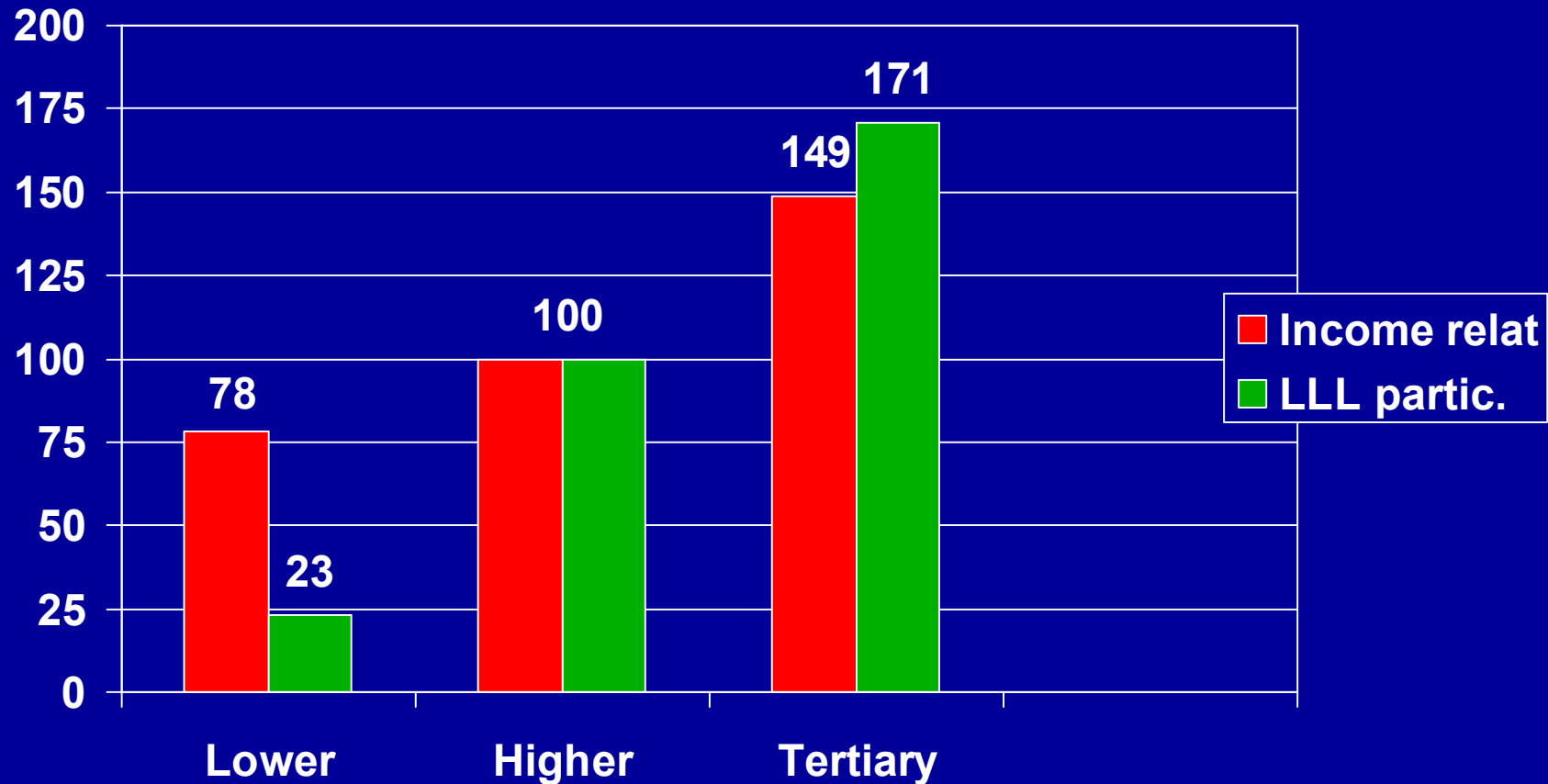
# EMPLOYMENT CHANGE AND SECTORAL CHANGE, EU27 in 1995 - 2005

	Mil. empl.	%	Share(%)
Services	+21,75	+17,3	68,8
Industry	-2,46	-4,4	25,1
Agricult..	-2,54	-16,5	6,0
Total empl.	+17,0	+8,6	100

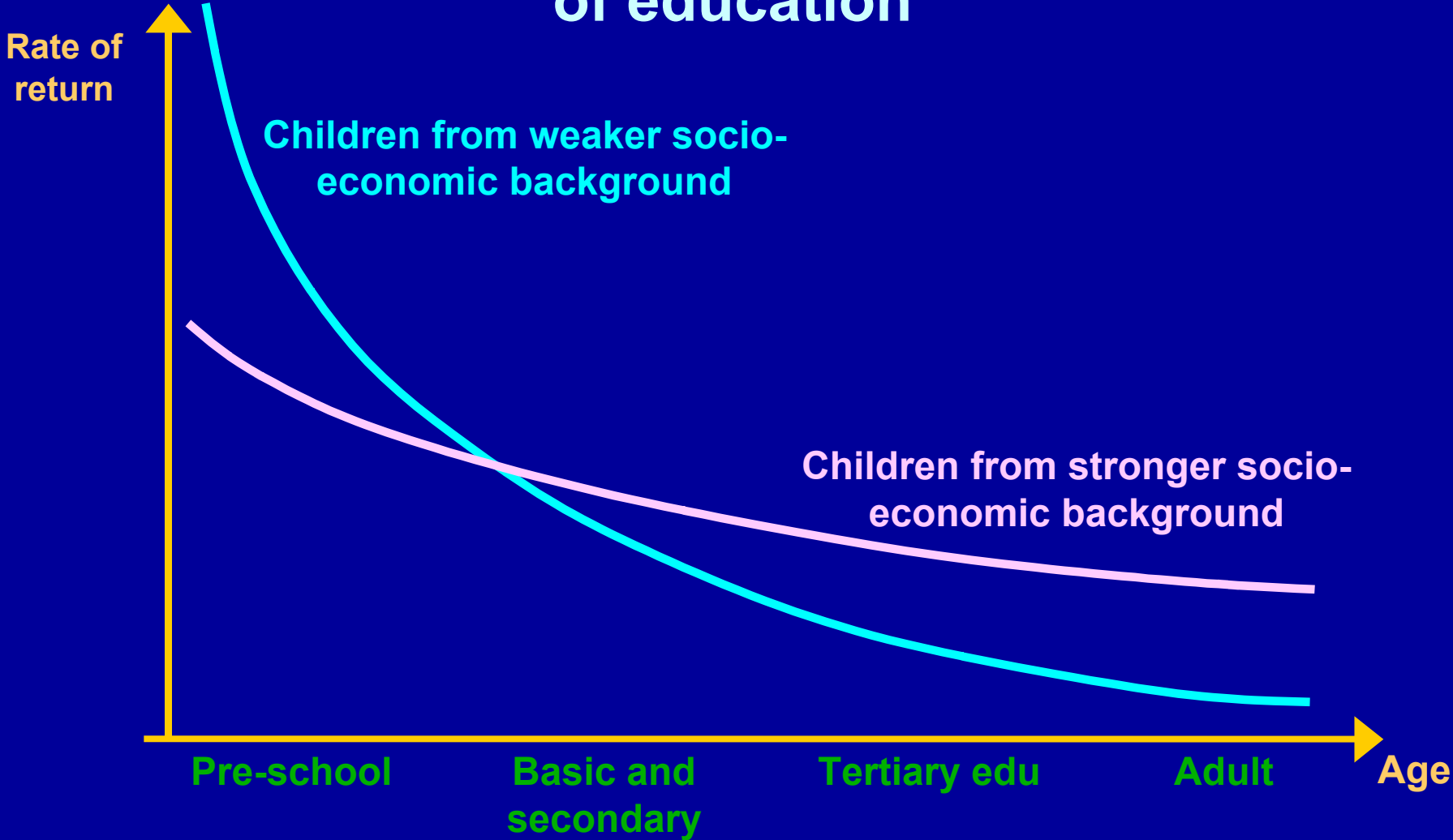
# Sectoral qualifications structures EU27, 2005



# Income level and continuation (level) of education (EU25, acc. OECD and Eurostat 2003)

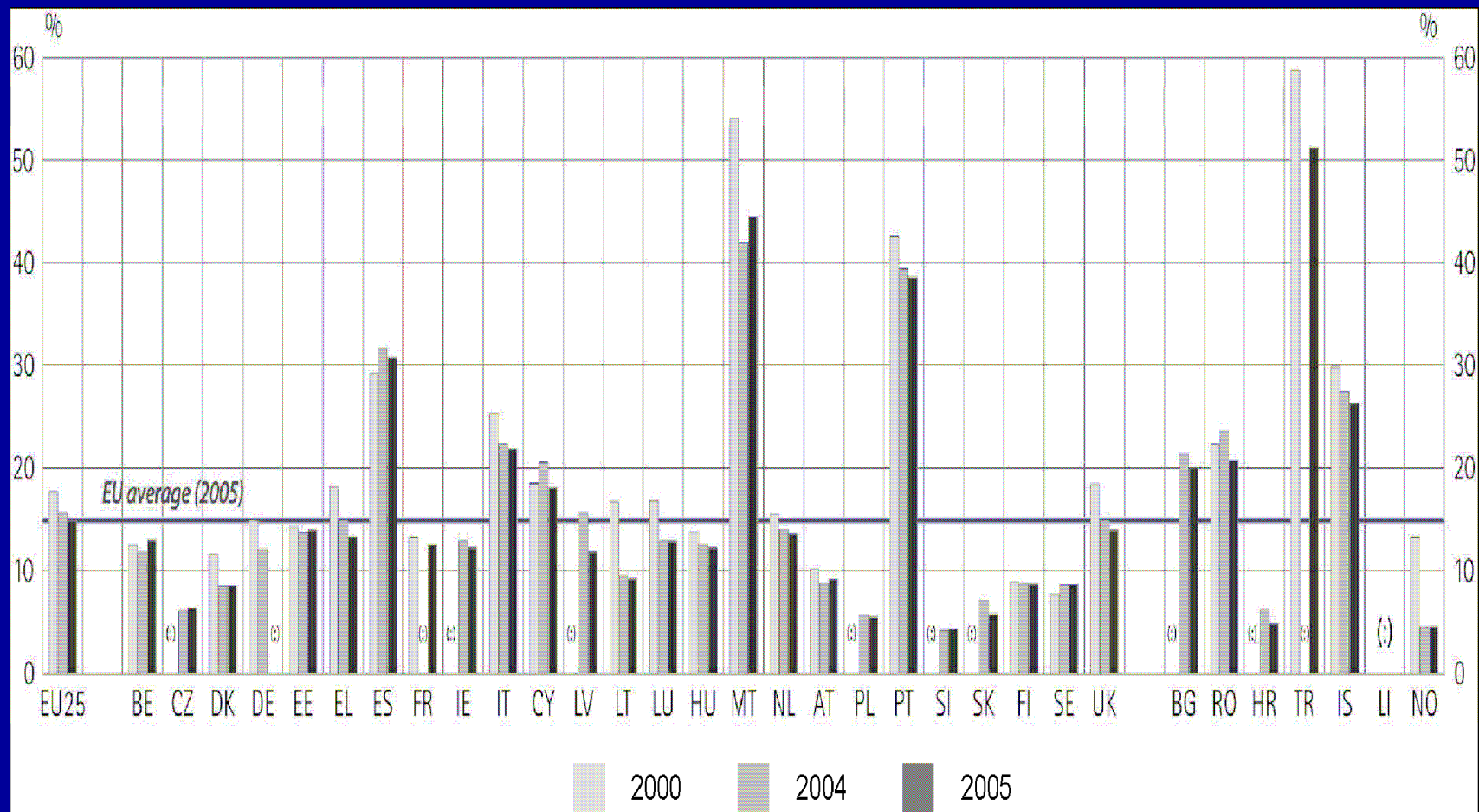


# Investment rate of return at different age levels of education



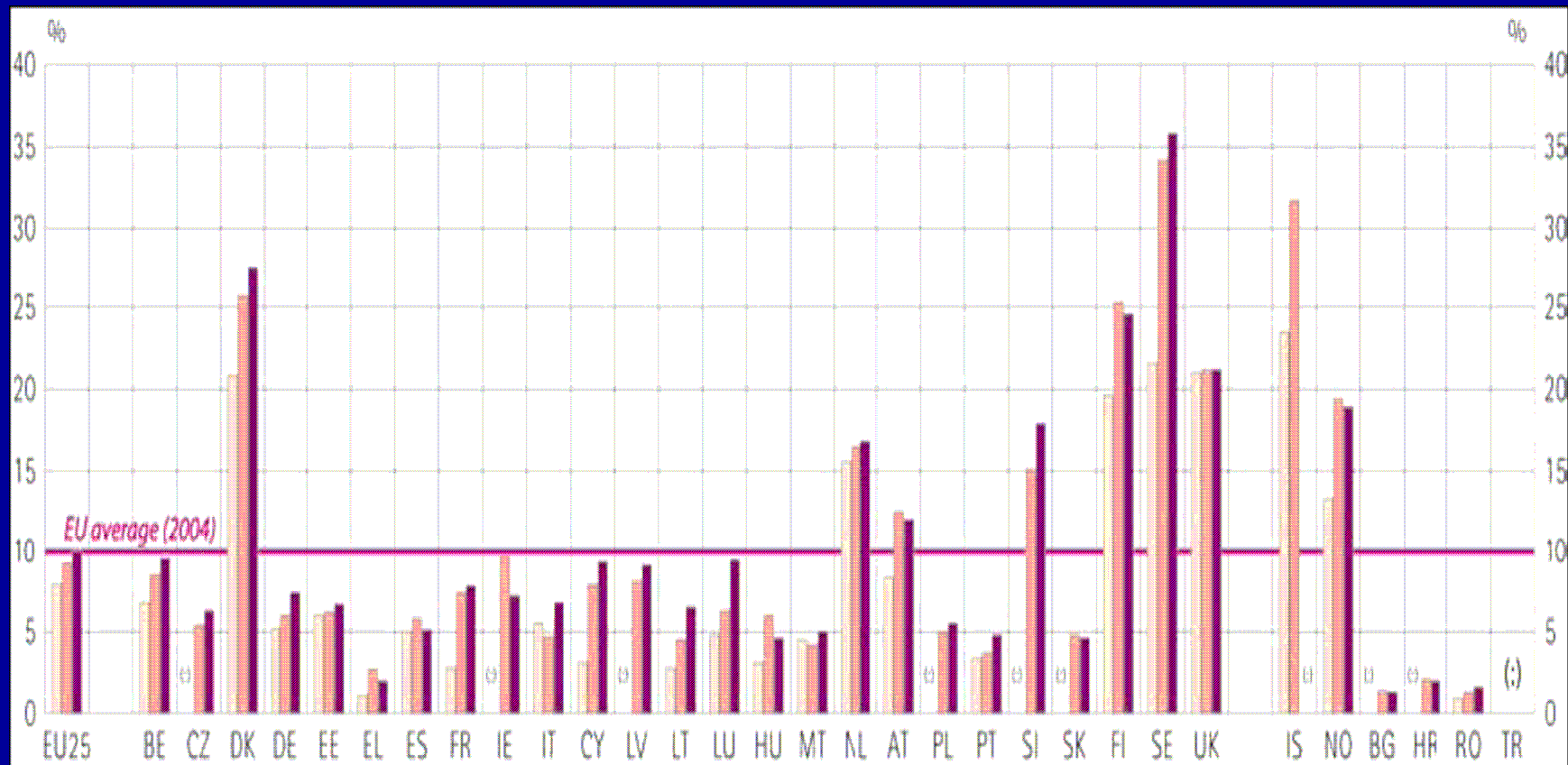
# EU EARLY DROP-OUT RATES FROM EDUCATION AND TRAINING (14,9%)

Goal 2010: max. 10 %



# LLL PARTICIPATION (ADULTS) (2000, 03, 04)

## Goal 2010: min. 12,5%



# Information – knowledge – wise society

## EDUCATION and TRAINING:

- Economic and social implications
- Human (personal) a societal potential
- Formation of a personality and a citizen (values)

„Education unites!“

**INTEGRATION = PARTICIPATION**  
(not absorption, not assimilation)

Conclusion: Individually and together

**INVEST BETTER AND MORE INTO EDUCATION !**